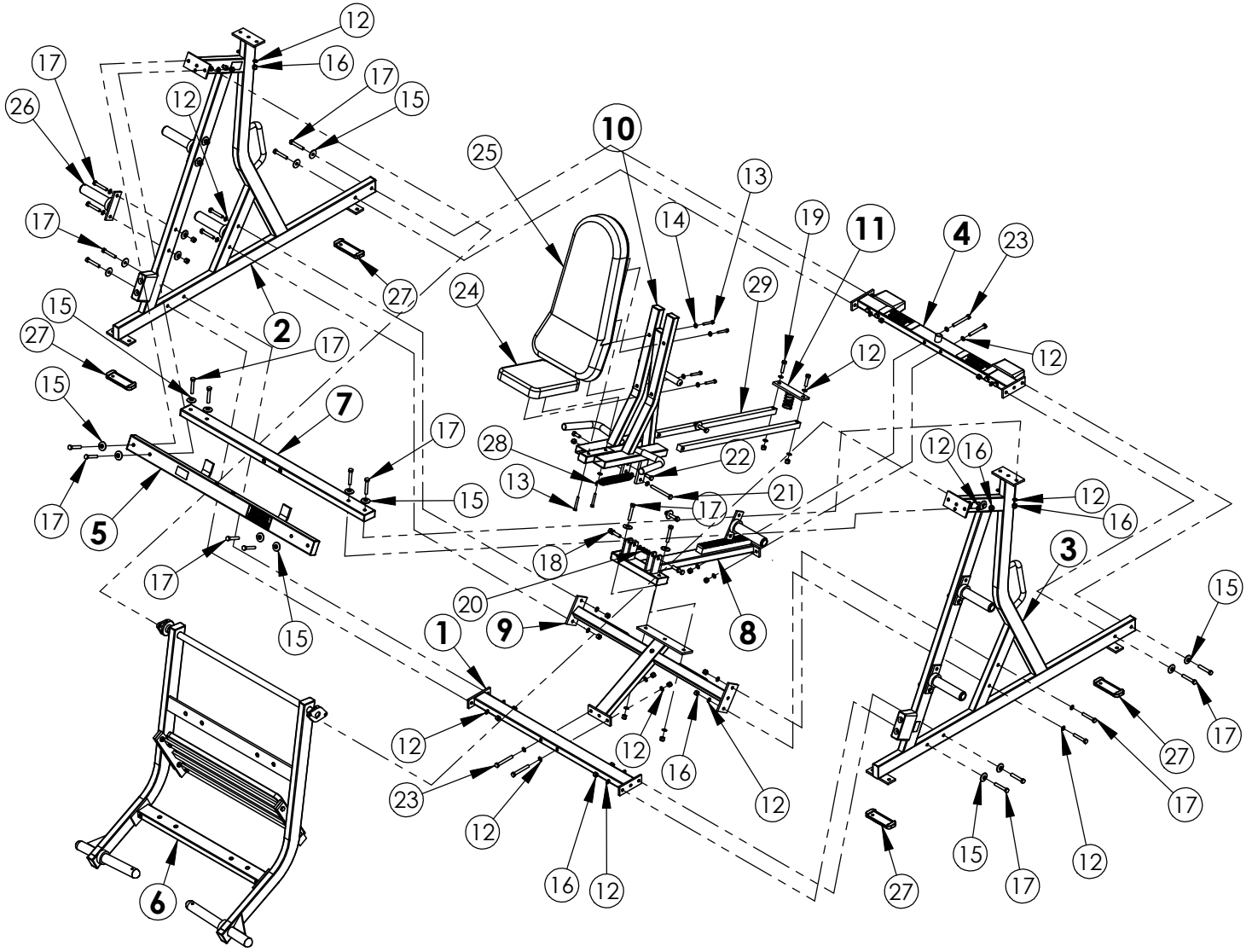


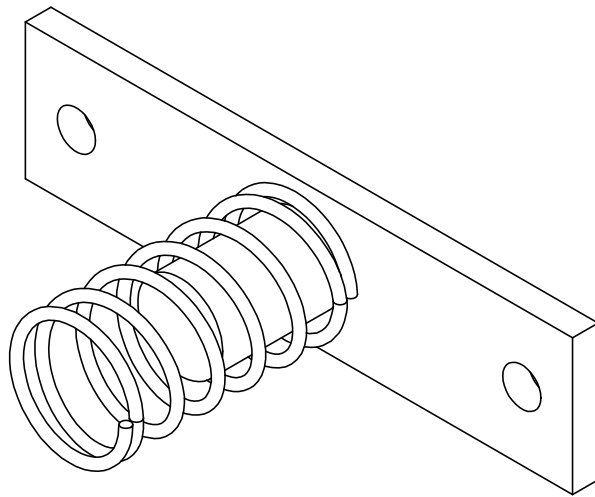
WEIGHT = 515.2 lbs / 229.6 kg
LENGTH = 72
WIDTH = 52
HEIGHT = 56

HAMMER STRENGTH EQUIPMENT PLLP EXPLODED



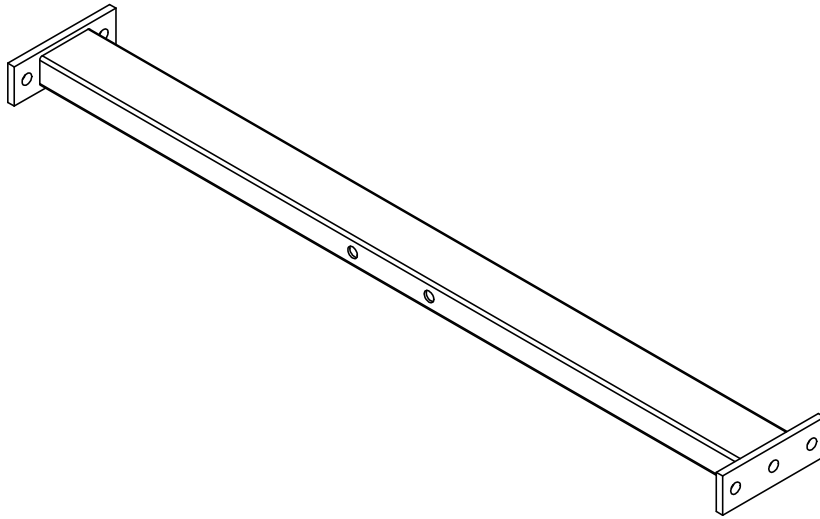
ITEM NO.	QTY.	PART NO.	DESCRIPTION
1	1	PLL-FX-0	WLDMT, PLLP, FRONT SEAT FRAME MOUNT
2	1	PLL-CSFR-1	ASSY, PLLP, Right Side Frame
3	1	PLL-CSFL-1	ASSY, PLLP, LEFT SIDE FRAME
4	1	PLL-CBX-0	ASSY, PLLP, REAR C-MEM
5	1	PLL-CWB-0	ASSY, PLLP, WORKBOX
6	1	PLL-CMA-3	ASSY, PLLP, MOVEMENT ARM
7	1	PLL-CWB2-0	ASSY, PLLP, TOP C-MEM
8	1	PLL-CST-0	ASSY, PLLP, SEAT RACK FRAME
9	1	PLL-CST2-0	ASSY, PLLP, SEAT FRONT FRAME
10	1	PLL-CAJST-0	ASSY, PLLP, ADJ. SEAT FRAME
11	1	PLL-ETC-0	WLDMT, PLLP, TOP SPRING GUIDE
12	51	WASH.5STAR	1/2" INTERNAL LOCK WASHER
13	6	HBB.375X2.5	STEEL BOLT 3/8 X 2.5
14	6	WASH.375SAE	3/8" SAE FLAT WASHER
15	26	H-BACK=WASH	BACKING WASHER
16	37	NUT.5LOCK	1/2 DIA THICK LOCK NUT
17	30	HBB.5X3	1/2 X 3 BOLT
18	2	HBB.5X2.5	1/2 X 2 1/2 BOLT
19	2	HBB.5X2	1/2 X 2 BOLT
20	2	NUT.5JAMLOCK	1/2 THIN LOCK NUT
21	1	HBB.5X5	1/2 X 5 BOLT
22	2	HBB-NYLON	1/2 X 1 BOLT NYLON
23	4	HBB.5X4	1/2 X 4 BOLT
24	1	U-13-5	Standard 13" Pad
25	1	U-PLL	
26	6	H-HORN-ASSY	ASSY, WEIGHT HORN
27	4	MM-8	2 X 6 FLANGE RUBBER SLIPPER
28	1	LP-EX-SPRNG	Leg Press Extension Spring
29	2	PLL-19-0	Seat Guide

HAMMER STRENGTH EQUIPMENT
PLL-ETC-0, WLDMT, PLLP, TOP SPRING GUIDE



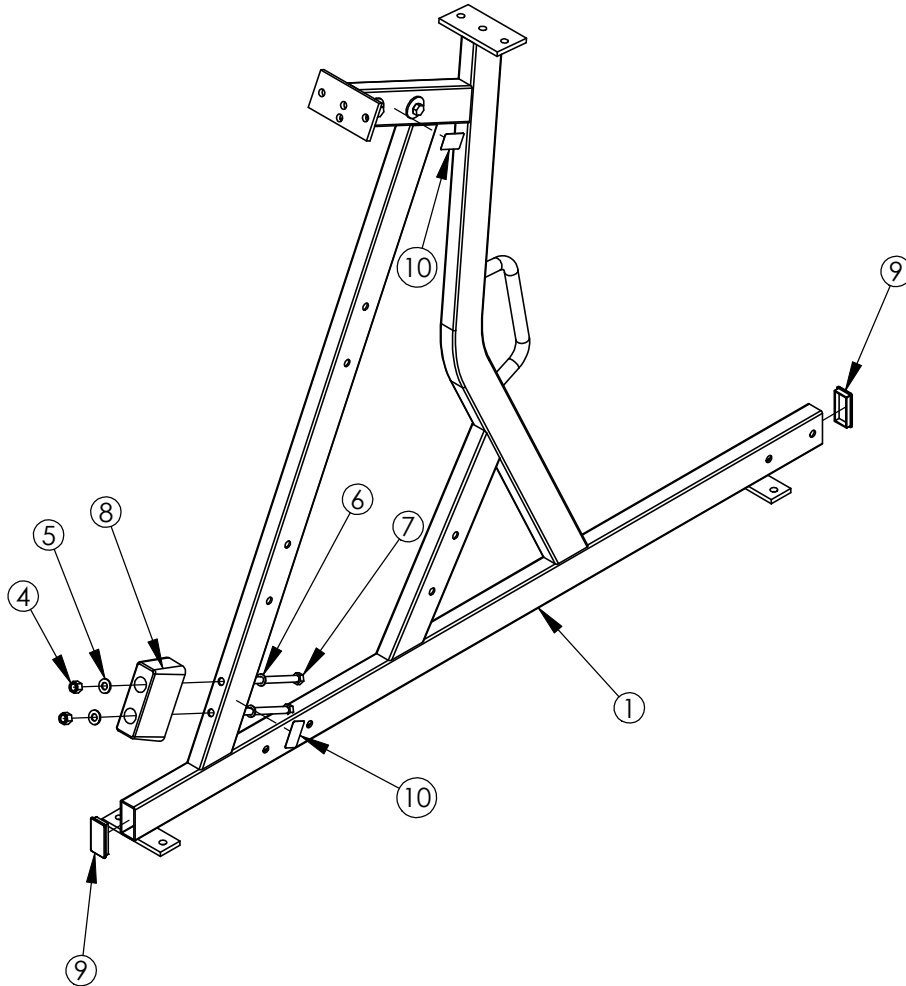
WEIGHT = 3 lb
LENGTH = 4"
WIDTH = 6"
HEIGHT = 2"

HAMMER STRENGTH EQUIPMENT
PLL-P-FX-0, WLDMT, PLLP, FRONT SEAT FRAME MOUNT



WEIGHT = 14 lb
LENGTH = 42 1/8"
WIDTH = 6"
HEIGHT = 2"

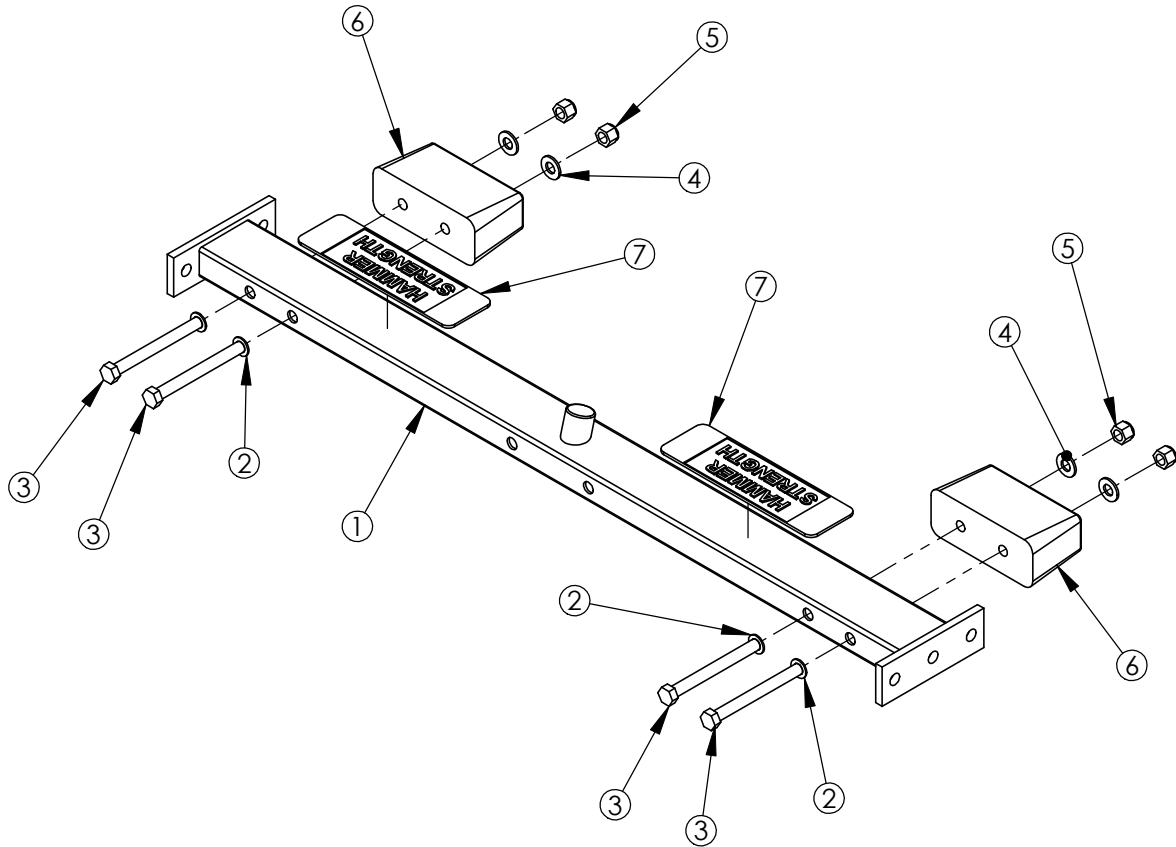
HAMMER STRENGTH EQUIPMENT
PLL-PSFL-1, ASSY, PLLP, LEFT SIDE FRAME



ITEM NO.	QTY.	PART NO.	DESCRIPTION
1	1	PLL-PSFL-0	WLDMT, PLLP, Side Frame
2	2	H-BACK-WASH	BACKING WASHER
3	2	HHB.5X3	1/2 X 3 BOLT
4	4	NUT.5LOCK	1/2 DIA THICK LOCK NUT
5	2	WASH.5SAE	1/2" SAE FLAT WASHER
6	2	WASH.5STAR	1/2" INTERNAL LOCK WASHER
7	2	HHB.5X6	1/2 X 6 BOLT
8	1	H-BUMP-LGE	LARGE BUMPER (VEN# MM1)
9	2	RC1530-1Q1	CAP:1-1/2 X 3 RECTANGLE PLUG
10	2	STAY CLEAR	STAY CLEAR DECAL

WEIGHT = 68lbs / 31kg
 LENGTH = 72
 WIDTH = 8
 HEIGHT = 55

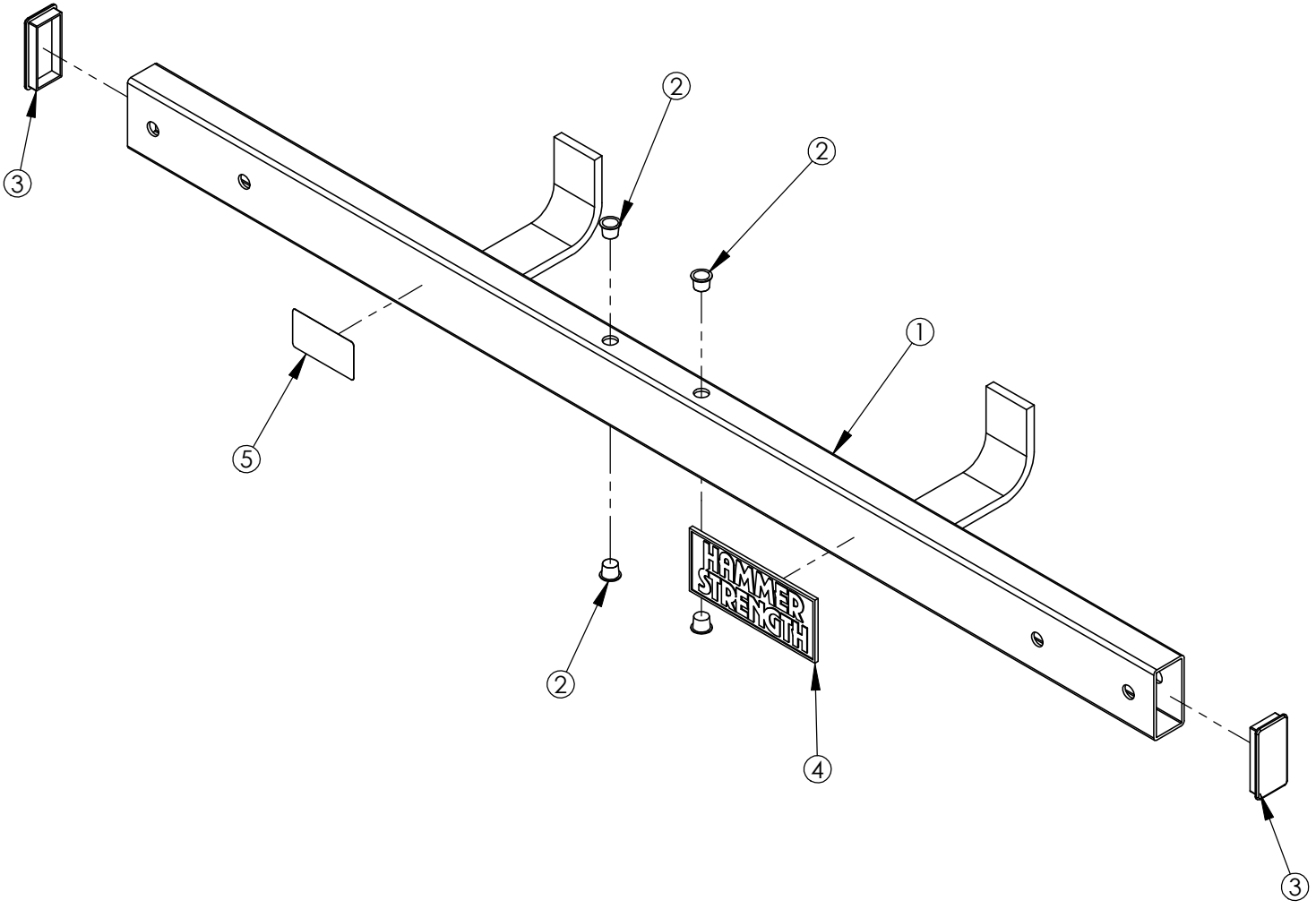
**HAMMER STRENGTH EQUIPMENT
 PLLP-CBX-0, ASSY, PLLP, REAR C-MEM**



ITEM NO.	QTY.	PART NO.	DESCRIPTION
1	1	PLLP-BX-0	WLDMT, PLLP, Rear Cross Member
2	4	WASH.5STAR	1/2" INTERNAL LOCK WASHER
3	4	HHB.5X5	1/2 X 5 BOLT
4	4	WASH.5SAE	1/2" SAE FLAT WASHER
5	4	NUT.5LOCK	1/2 DIA THICK LOCK NUT
6	2	H-BUMP-LGE	LARGE BUMPER (VEN# MM1)
7	2	H-NONSKID 3X9	PLASTIC NON SKID STRIP 3 X 9

WEIGHT = 16lbs / 7.5kg
 LENGTH = 42.5
 WIDTH = 8
 HEIGHT = 3

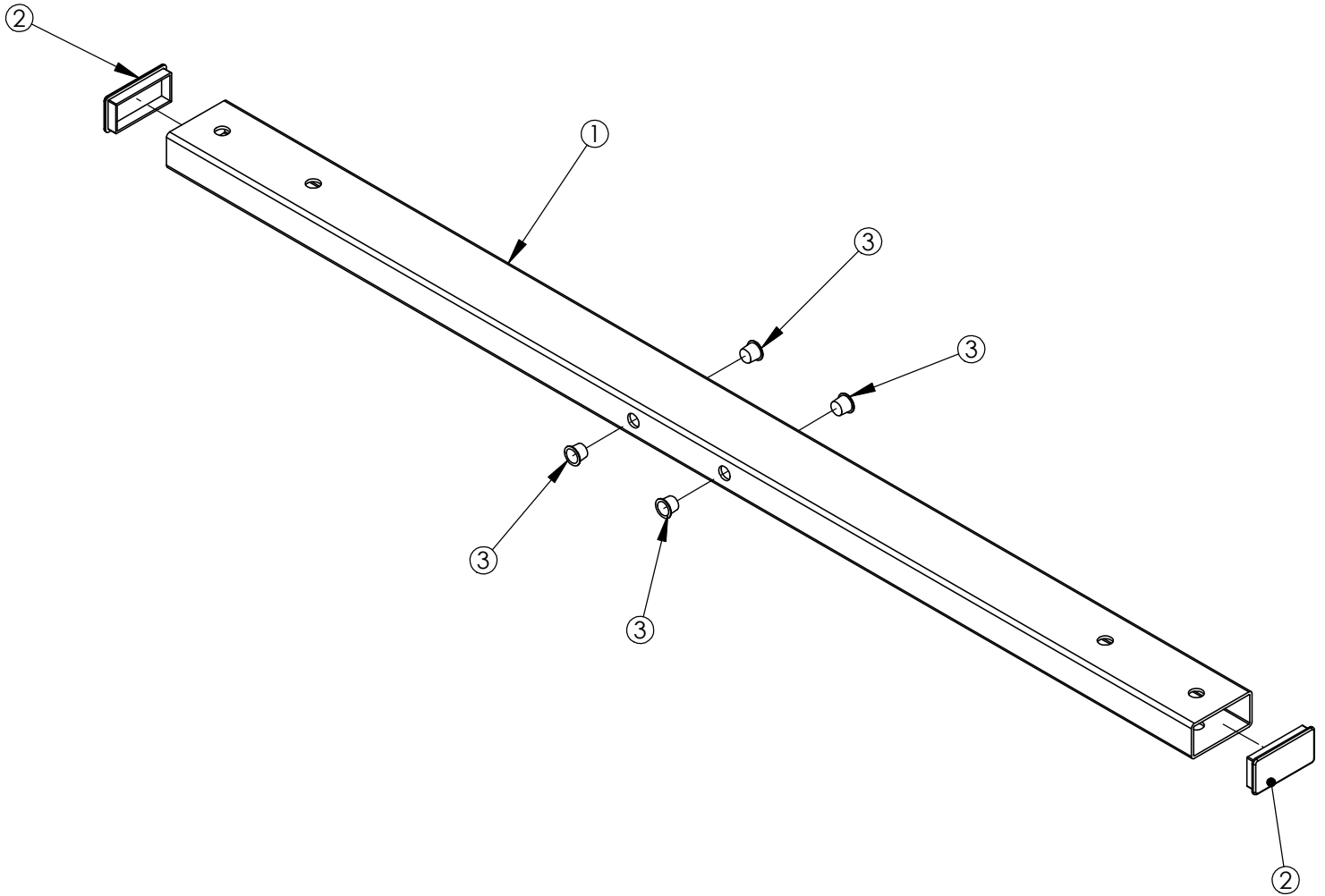
**HAMMER STRENGTH EQUIPMENT
 PLLP-CWB-0, ASSY, PLLP, WORKBOX**



ITEM NO.	QTY.	PART NO.	DESCRIPTION
1	1	PLLP-WB-0	WLDMT, PLLP, Workbox
2	4	H-HPLUG (REG)	9/16IN HOLE PLUG
3	2	RC1530-1Q1	CAP:1-1/2 X 3 RECTANGLE PLUG
4	1	H-NAME PLATE	NAMEPLATE (45156-P)
5	1	8773701	ASTM DECAL

WEIGHT = 18lbs / 8kg
 LENGTH = 51
 WIDTH = 8
 HEIGHT = 4

HAMMER STRENGTH EQUIPMENT
PLL-P-CWB2-0, ASSY, PLLP, TOP C-MEM



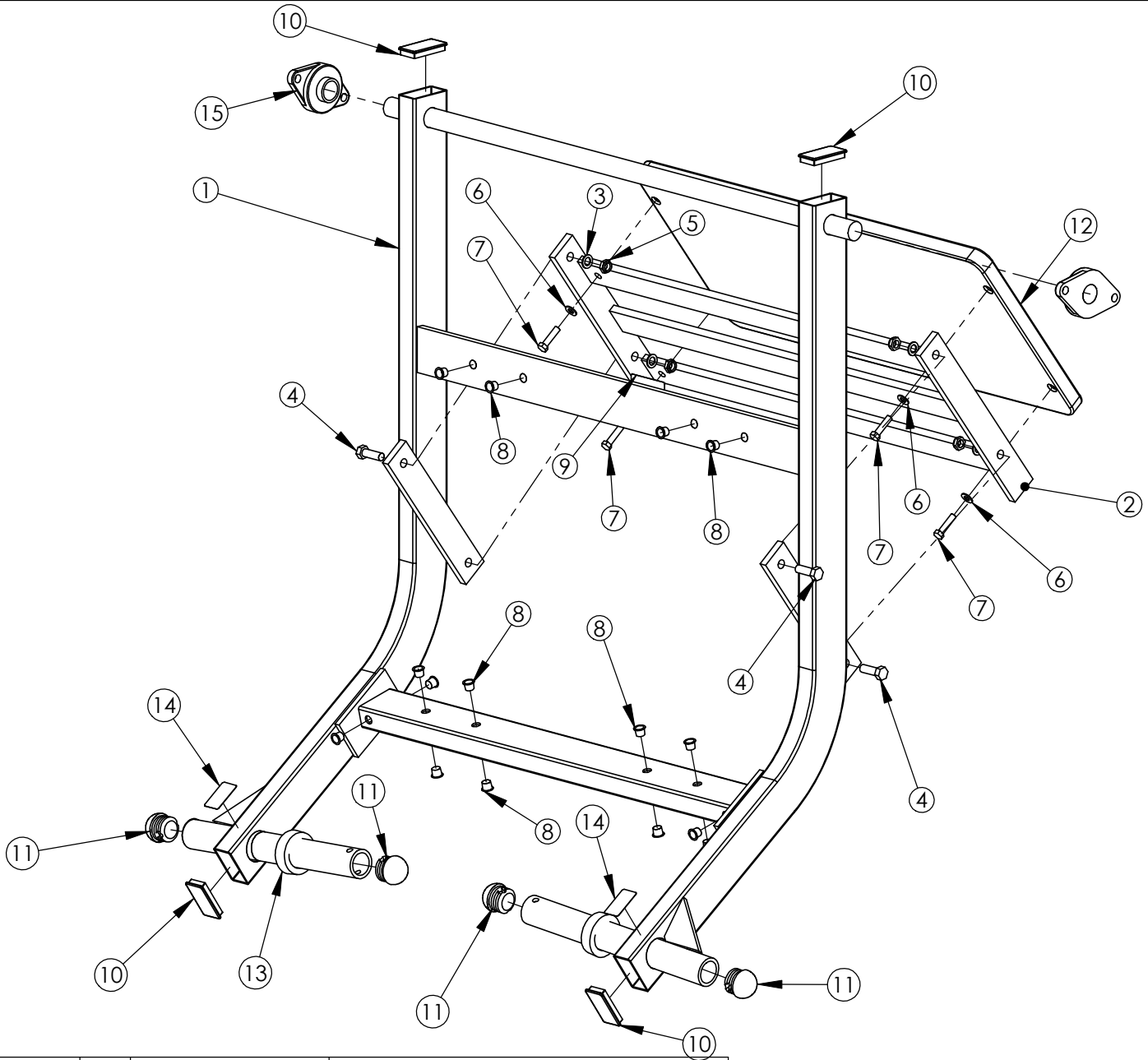
WEIGHT = 15lbs / 7kg
 LENGTH = 51
 WIDTH = 3
 HEIGHT = 2

PAGE 8 OF 13

ITEM NO.	QTY.	PART NO.	DESCRIPTION
1	1	PLL-45-0	Workbox Crossmember
2	2	RC1530-1Q1	CAP:1-1/2 X 3 RECTANGLE PLUG
3	4	H-HPLUG (REG)	9/16IN HOLE PLUG

HAMMER STRENGTH EQUIPMENT

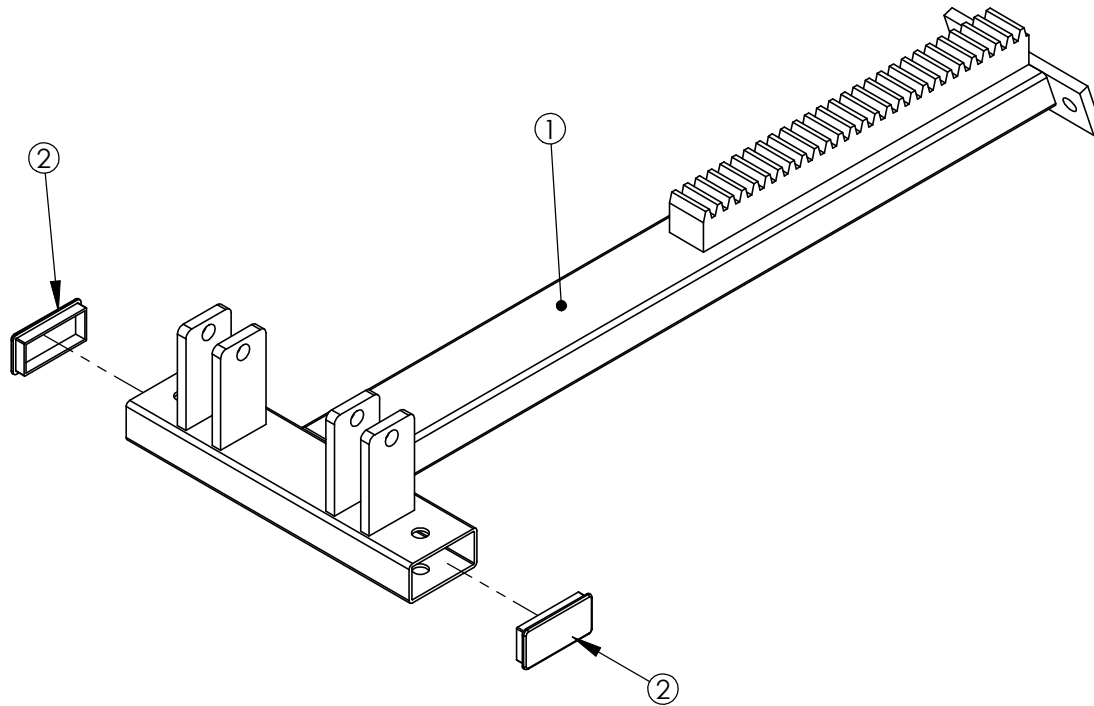
PLL-CMA-3, ASSY, PLL, MOVEMENT ARM



ITEM NO.	QTY.	PART NO.	DESCRIPTION
1	1	PLL-MA-2	WLDMT, PLLP, Movement Arm
2	1	PLL-MX-0	WLDMT, PLLP, Footboard Frame
3	4	WASH.5STAR	1/2" INTERNAL LOCK WASHER
4	4	HHB.5X1.5	BOLT, HEX HEAD 1/2 X 1-1/2
5	4	NUT.5JAMLOCK	1/2 THIN LOCK NUT
6	4	WASH.375SAE	3/8" SAE FLAT WASHER
7	4	HHB.375X1.5	STEEL BOLT 3/8 X 1.5
8	16	H-HPLUG (REG)	9/16IN HOLE PLUG
9	1	PATENT	PATENT DECAL
10	4	RC1530-1Q1	CAP:1-1/2 X 3 RECTANGLE PLUG
11	4	RUBCAP1-2	RUBBER CAP #1
12	1	U-FBLP	LEG PRESS FOOTBOARD
13	2	H-RUBRNG	MM5 RING
14	2	STAY CLEAR	STAY CLEAR DECAL
15	2	H-BEAR-LGE	LARGE BEAR - EFHSFTJ206-20G

WEIGHT = 128 lbs / 58 kg
 LENGTH = 50
 WIDTH = 48
 HEIGHT = 25

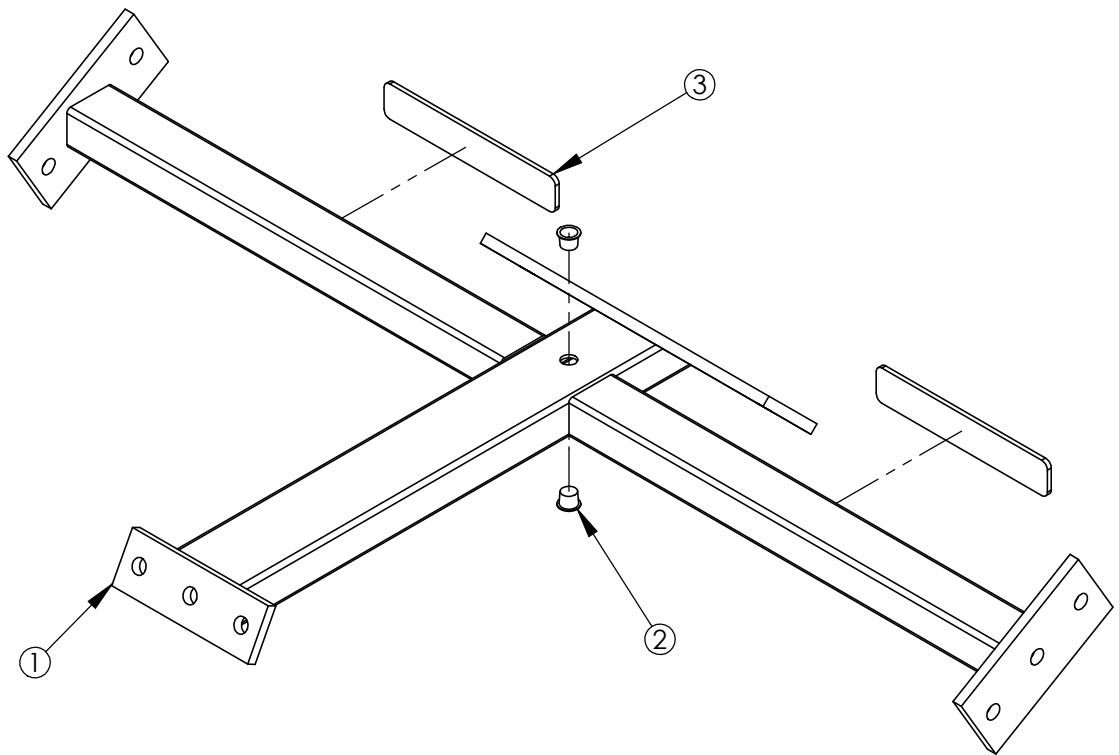
**HAMMER STRENGTH EQUIPMENT
 PLLP-CST-0, ASSY, PLLP, SEAT RACK FRAME**



WEIGHT = 25lbs / 11.5kg
 LENGTH = 34
 WIDTH = 12.5
 HEIGHT = 6

ITEM NO.	QTY.	PART NO.	DESCRIPTION
1	1	PLLP-ST-0	WLDMT, PLLP, Rear Seat Frame Assembly
2	2	RC1530-1Q1	CAP:1-1/2 X 3 RECTANGLE PLUG

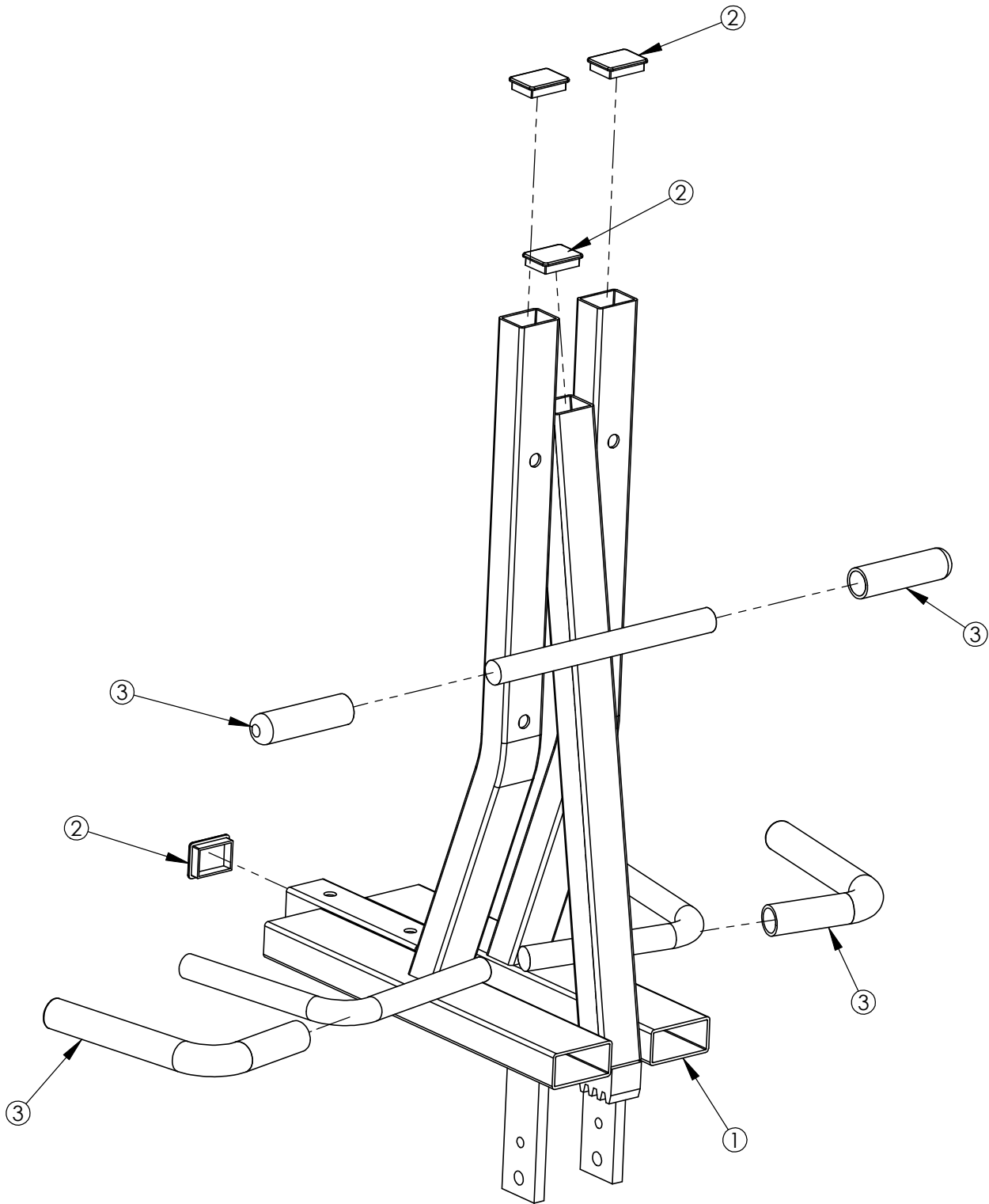
**HAMMER STRENGTH EQUIPMENT
 PLLP-CST2-0, ASSY, PLLP, SEAT FRONT FRAME**



ITEM NO.	QTY.	PART NO.	DESCRIPTION
1	1	PLLP-ST2-0	WLDMT, PLLP, Seat Frame 2
2	2	H-HPLUG (REG)	9/16IN HOLE PLUG
3	2	H-PLATE-G1	SMALL PLATE GUARD

WEIGHT = 23 lb
 LENGTH = 22 1/8"
 WIDTH = 42 1/8"
 HEIGHT = 5 3/4"

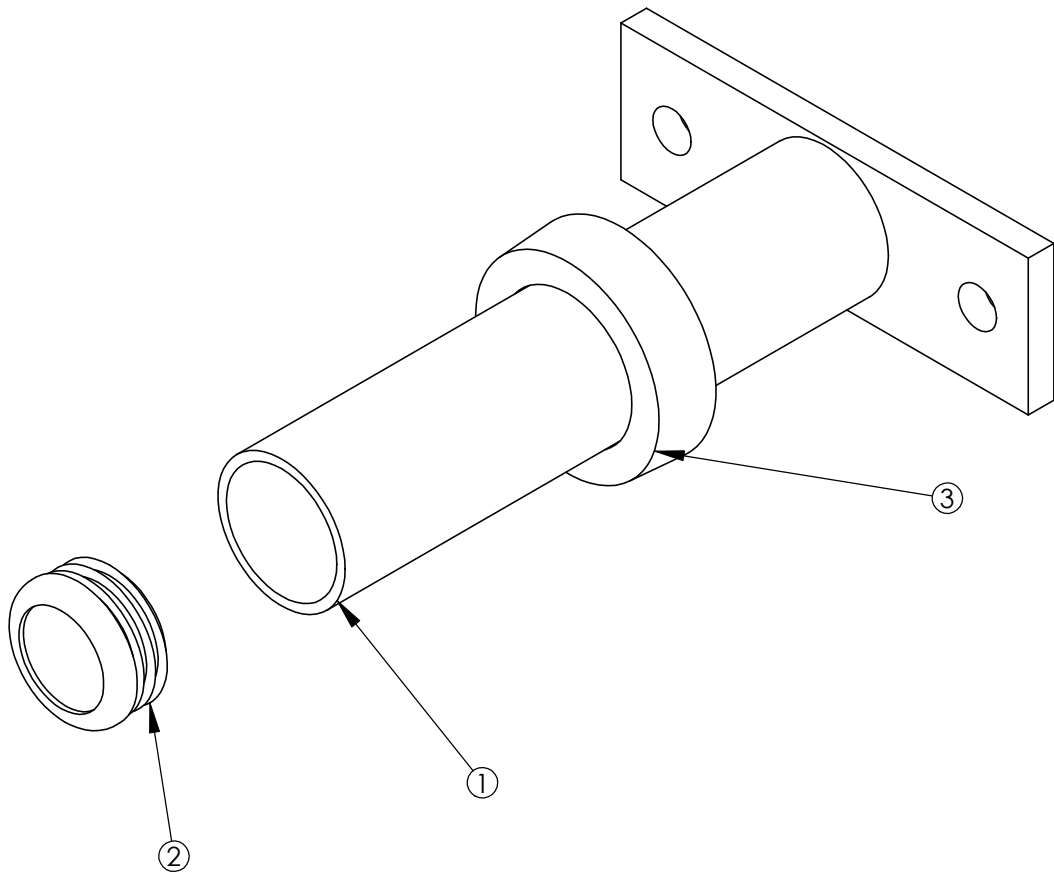
HAMMER STRENGTH EQUIPMENT
PLL-CAJST-0, ASSY, PLLP, ADJ. SEAT FRAME



WEIGHT = 55lbs / 25kg
 LENGTH = 25
 WIDTH = 22
 HEIGHT = 42

ITEM NO.	QTY.	PART NO.	DESCRIPTION
1	1	PLL-CAJST-0	Adjustable Seat
2	4	RC1520-1Q1	CAP:1-1/2 X 2 RECTANGLE PLUG
3	4	H-GRIP	HANDLE GRIPS (.938X16)

HAMMER STRENGTH EQUIPMENT
H-HORN-ASSY: WEIGHT HORN ASSEMBLY



ITEM NO.	QTY.	PART NO.	DESCRIPTION
1	1	H-HORN	WLDMT, WEIGHT HORN
2	1	8078001	CAP, END 1.75 DIA RD 14-20 GA
3	1	H-RUBRNG	MM5 RING

WEIGHT = 3 1/4 lb
 LENGTH = 8 5/8"
 WIDTH = 6"
 HEIGHT = 3"